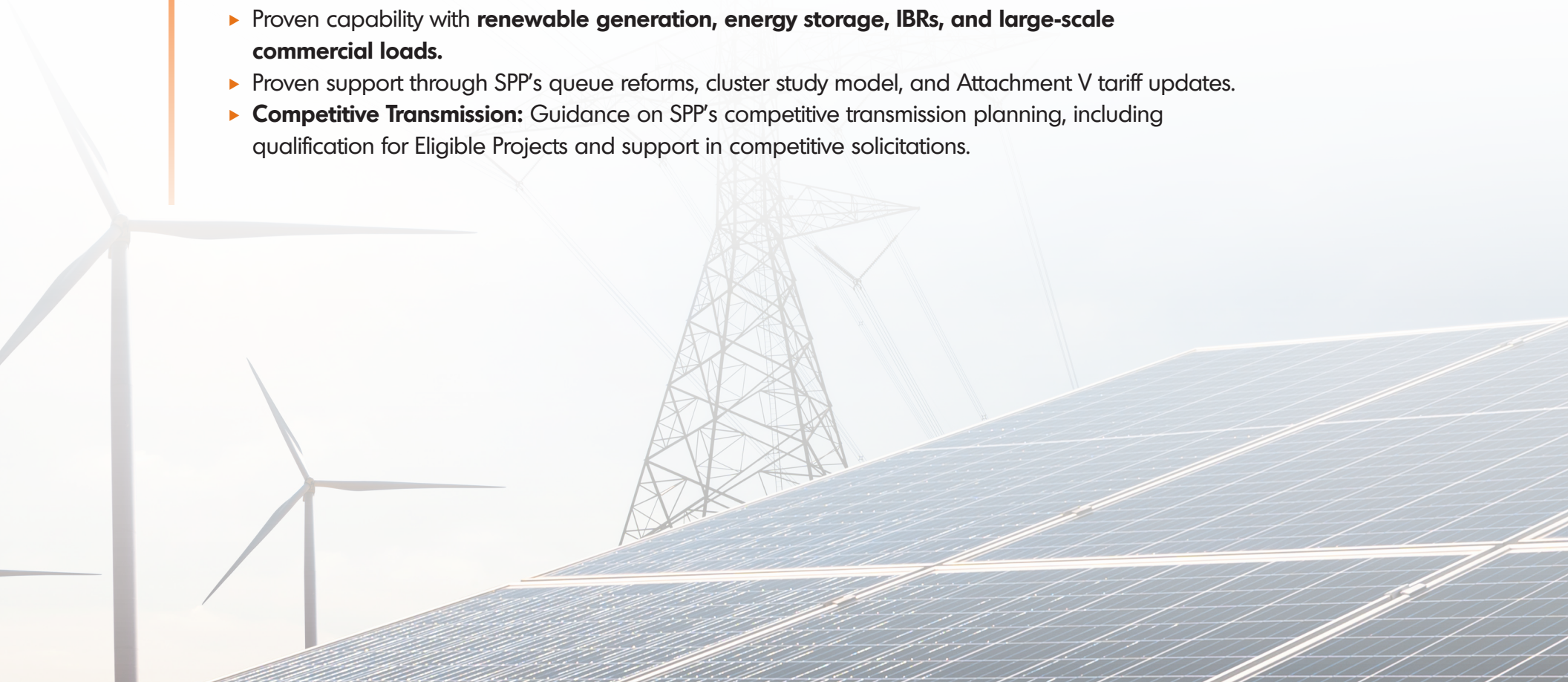


EXPERTISE IN THE SPP REGION

RMS Energy delivers expert interconnection support across the SPP footprint, serving generation, storage, and major load projects:

- ▶ Deep experience with **developers and Transmission Owners** throughout SPP's 14-state footprint.
- ▶ Expertise spanning **full interconnection lifecycle: studies, modeling, commissioning, and compliance.**
- ▶ Proven capability with **renewable generation, energy storage, IBRs, and large-scale commercial loads.**
- ▶ Proven support through SPP's queue reforms, cluster study model, and Attachment V tariff updates.
- ▶ **Competitive Transmission:** Guidance on SPP's competitive transmission planning, including qualification for Eligible Projects and support in competitive solicitations.



SPP GENERATOR INTERCONNECTION PROCESS (UNDER ATTACHMENT V)

RMS Energy guides clients through each phase of the SPP Generator Interconnection Procedure (“GIP”):

- ▶ **Submit GIR:** Complete Appendix 3 + Attachments A/B/C, submit via SIMS portal, including cash/study deposits & Site Control (including Gen Tie ROW)
- ▶ **Queue Assignment:** After validation, projects enter the DISIS cluster queue.
- ▶ **Cluster Study:** SPP delivers combined System Impact and Facilities studies within revised, accelerated timelines and with updated financial security rules.
- ▶ **GIA Execution:** Upon successful studies, RMS supports Agreement negotiation and execution.

Key Changes In SPP’s GIP Under Attachment V

- ▶ Transition to **cluster studies** for efficiency in queue processing.
- ▶ Suspends fixed DISIS window closing—queue opens until MW threshold reached.
- ▶ **New financial security requirements**, withdrawal penalties, and escalated deposit policies.
- ▶ Revised site control demands—must include Gen Tie Line ROW or alternate financial security.

RMS Energy Support Capabilities

- ▶ Prepare full GIR submission package (Appendix 3, A/B/C, Site Control, deposits) via SIMS.
- ▶ Navigate cluster entry, study coordination, and stakeholder communication.
- ▶ Model and analyze system impacts (thermal, zero-sequence, short-circuit, stability).
- ▶ Facilitate GIA negotiations and support post-study activities.
- ▶ **Competitive Transmission advisory:** Support for clients pursuing SPP transmission opportunities under Attachment Y or competitive bid processes.

DISIS STUDY FLOW (CLUSTER-BASED PROCESS)

- ▶ **Application Phase:** RMS ensures timely validation of GIR with all required attachments, deposits, and attestations.
- ▶ **DISIS Cluster Studies:** Inclusive of System Impact Study and Facilities Study with revised, faster timelines.
- ▶ **Results & Decision:** Developers may adjust, withdraw, or proceed to GIA based on study outcomes.

RMS Services Across Scenarios:

- ▶ Tailored process support for all resource types—large renewables, small certified units, and replacements.
- ▶ Ensuring streamlined, compliant entries into SPP’s interconnection framework.
- ▶ **Competitive Transmission engagement:** Strategic studies and bid preparation for developers in SPP’s competitive transmission process.

Additional Interconnection Paths

- ▶ **Small Facilities / Certified IBRs:** Streamlined paths under specific appendices (e.g., Appendix 11, small generator standards)
- ▶ **Replacement Facility Process (GFRE):** Reliability Assessment + Replacement Impact Study to handle generator replacement at same POI. If material impact is found, it proceeds as a new GI request.

SPP INTERCONNECTION PROCESS:

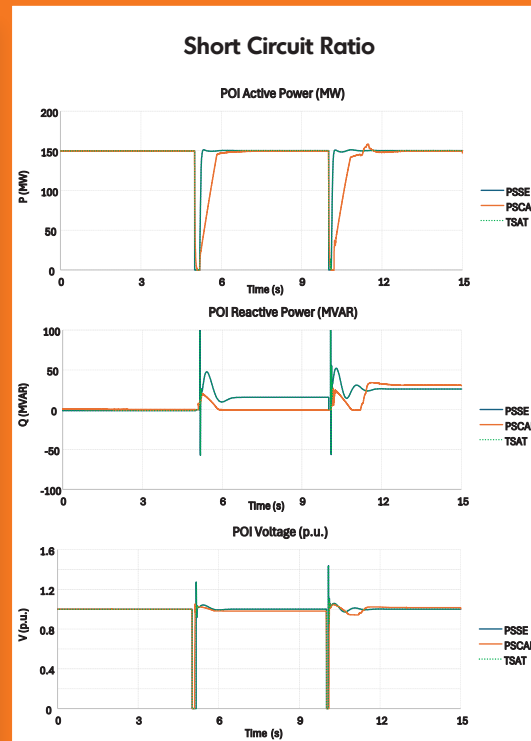
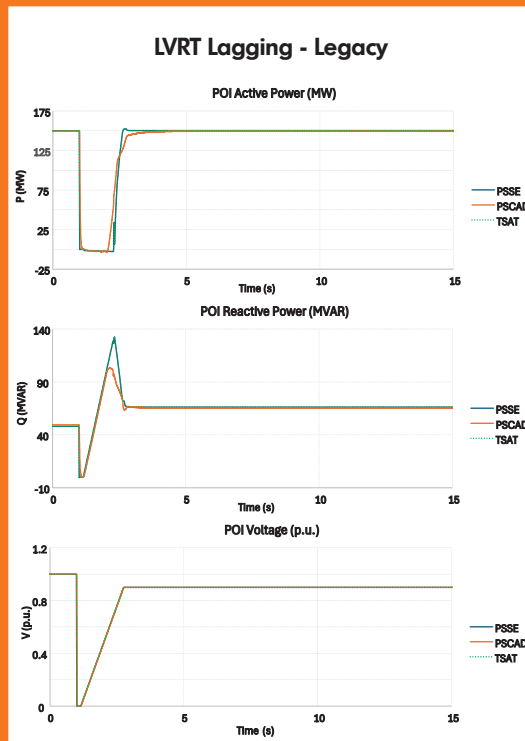


TECHNOLOGICAL & RESOURCE EXPERTISE

- ▶ **Resource types:** Solar, Onshore/Offshore Wind, BESS, Thermal, IBRs, Large Loads.
- ▶ **Technical tools:** Power flow analysis, stability modeling, GI-ready dynamic modeling.

Why Partner with RMS Energy?

- ▶ Trusted partner across PJM, ERCOT, MISO, SPP, NYISO, ISONE, CAISO.
- ▶ Specialized expertise in SPP's evolving cluster study model and Attachment V tariff reforms.
- ▶ Efficient delivery: Streamlined submissions, reduced delays, optimized cost exposure during interconnection.
- ▶ Trusted client outcomes: Faster path from application to commissioning with minimal revisions or delays.
- ▶ **Competitive Transmission experience:** Supporting clients in qualifying, competing, and succeeding in SPP's transmission project selection processes.



SPP MODEL QUALITY TEST

TEST # TEST NAME

| | |
|----|--|
| 1 | Flat run (EMT) |
| 2 | 3 ϕ fault ride-through (EMT): 6-cycle, zero-impedance |
| 3 | Voltage set-point step (EMT): PPC Vref step |
| 4 | Active-power set-point step (EMT): PPC Pref step |
| 5 | Waveform quality (EMT) |
| 6 | HVRT protection check (EMT) |
| 7 | LVRT protection check (EMT) |
| 8 | Protection implementation (EMT) |
| 9 | Weak-grid (SCR) performance (EMT) |
| 10 | Frequency behavior (EMT) |

